

Manual of local monitoring management system

Version 3.0

stateme

Thank you very much for purchasing our products, if you have any questions or needs in the use of the process please feel free to contact us.

This manual is based on the current software and hardware, as a result of the update, modification and upgrade, as well as hardware equipment upgrades, may cause manual description of the technical problems exist inaccurate or imperfect place, please understand. If you can not solve the problem in accordance with the use of the manual, please call our technical department to contact the relevant methods of operation. Manual will be updated regularly, if necessary, please go to my company website download, without notice.

Recommended PC base configuration:CPU four core 3.0GHz, 4G memory, 512M Independent graphics card, 2.1 sound card, Audio output, MIC input, WINDOWSXP/7/8/10

catalog

1.Client Overview.....	1
------------------------	---

2. Client Installation and uninstall.....	1
2.1 installation.....	1
2.2 Uninstall.....	3
3. Client Login.....	3
4.1 function.....	4
4.2 Configuration.....	4
5. Equipment Management.....	4
5.1 Automatic Search.....	5
5.2 Add Device.....	6
5.3 Modify Device.....	6
5.4 Remote Configuration.....	7
5.5 Remove Device.....	7
5.6 directory upgrades, file upgrades, and upload configurations.....	7
5.7 Video Program.....	8
5.8 restore factory, reboot device and download configuration.....	8
6. Preview.....	9
6.1 Tree List View.....	9
6.3 PTZ Control.....	12
6.4 real-time monitoring.....	13
7. Local playback.....	16
8. Remote Playback.....	17
9. Broadcast.....	19
10. E- map.....	20
10.1 Load maps and delete maps.....	20
10.2 Edit Map.....	20
10.3 Preview Map.....	21
11. Alarm Event	22
12. systemSettings.....	23
13. other.....	23

1. Client Overview

The local monitoring management system is the application software which takes the LAN as the medium channel, carries on the real-time monitoring, the capture, the video recording, receives/handles the alarm, the View history video, with the remote intercom, carries on the broadcast and so on multiple monitoring points to the multiple monitoring points.

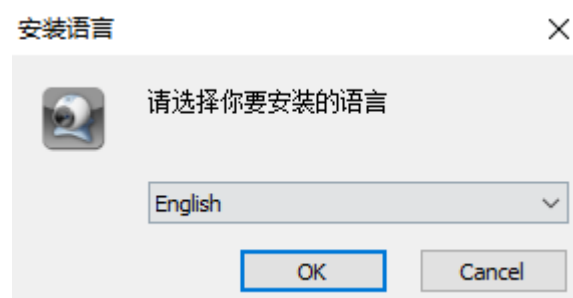
This manual is provided for users who use the local monitoring and management system, and you should have basic operational knowledge and experience of related equipment such as ipc, nvs, dvr. If you have not used IPC and other related equipment, you can use this manual with the "Ipcamera use manual" V3. 0. This will enable you to quickly and skillfully use our products.

The system is further designed and perfected, please pay attention to our official website dynamic, download the latest version of the system installation and use. The function of the system if there is not perfect place, please understand. And I implore you to give valuable advice to encourage us to better improve the system, the suggestions you put forward I am very grateful.

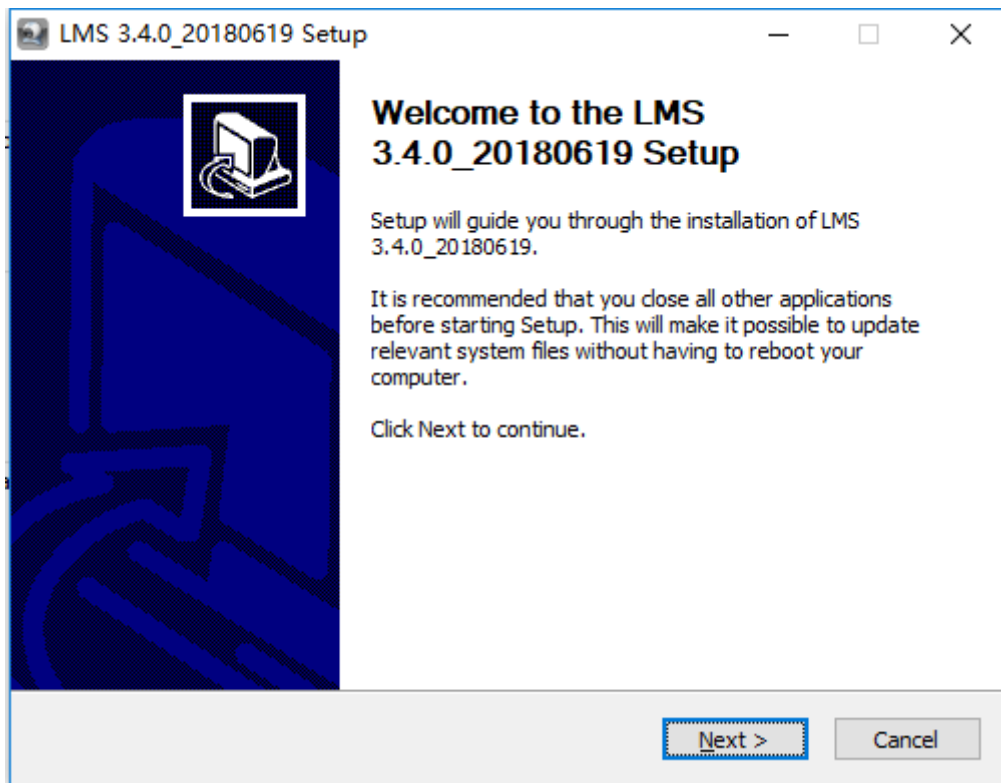
2. Client Installation and uninstall

2.1 installation

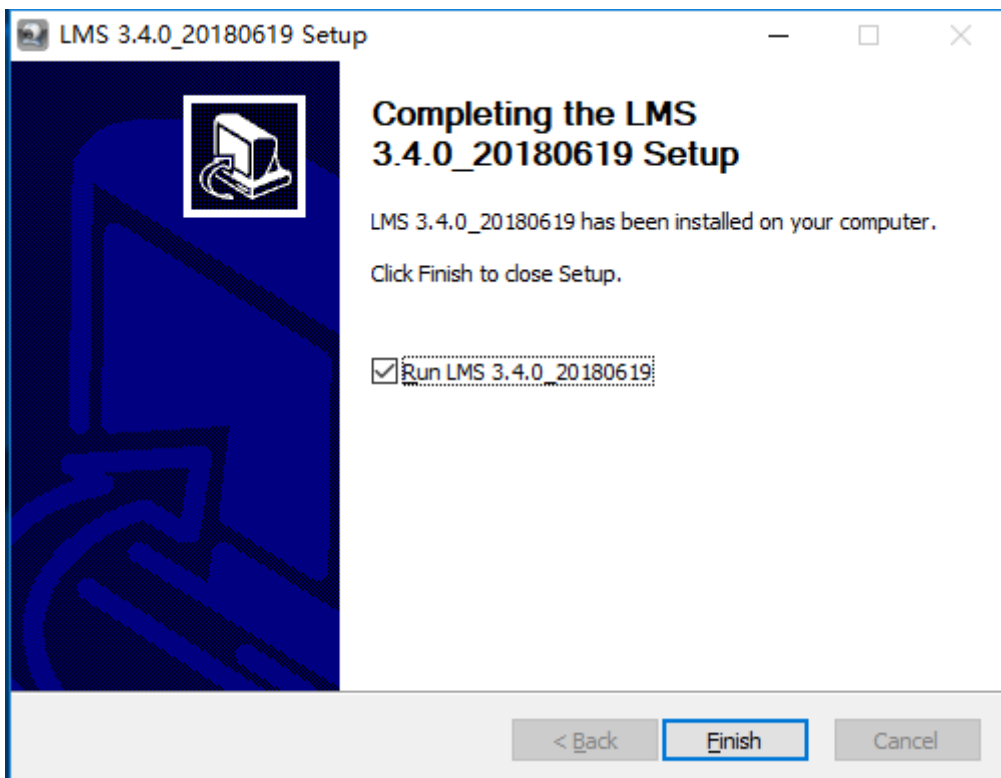
① Double click Lms_install_vx.x.x_xxxx.exe Install the program, choose the installation language;



② Click "OK" button to start the Installation wizard;

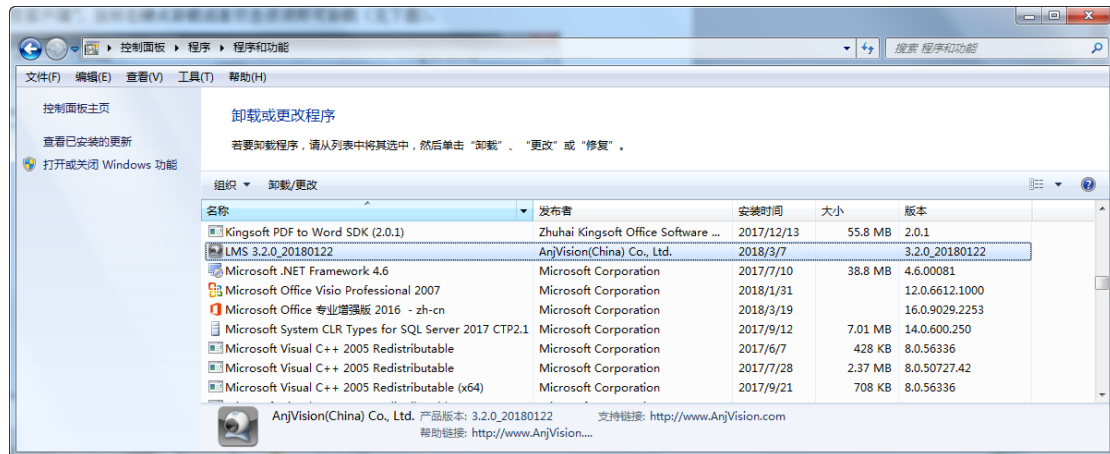


- ③ Click the "Next" button to enter the selection of installation location interface, set up the program installation directory;
- ④ Click on the "Install" button to start the installation;
- ⑤ The system pops up the installation completion interface and clicks "Finish" to exit.



2.2 Uninstall

Click [the Start] button to select settings → control panel → program → uninstall program, in the uninstall or change the program interface select "LMS x.x.x_xxxx", the right mouse button uninstall or double-click the item can be unloaded (the following figure).



3. Client Login

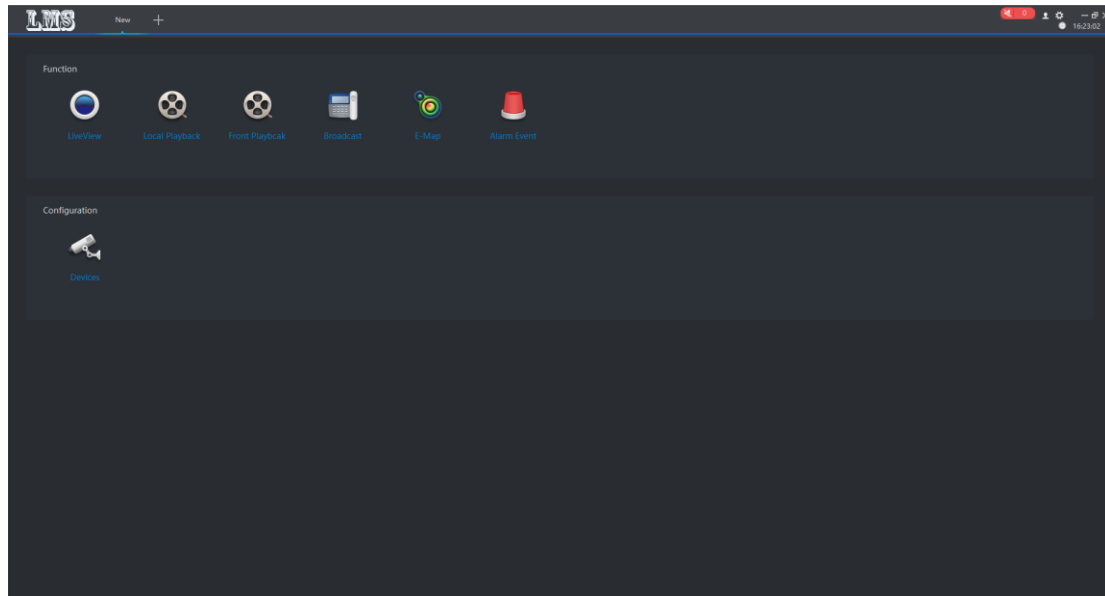
After the client installation is successful, run the client, enter the login interface as shown below, enter the username and password point login can



user name: the username that is logged on locally, with the initial value: Admin ;
password : the password for the local logon, with the initial value: 123456 , can be changed after login;
Remember password: Check this item, the next login does not need to re-enter the password;

Login automatically: when checked, the next time you double-click the client icon, you do not need to enter a username and password to enter the system directly.

4. Client common function configuration



4.1 function

preview: to the packet channel for real-time preview operation, as well as video, capture, Yuntai and other operations.

Local playback: search and playback of local video files for the packet channel

remote playback: search and playback of remote video files for a packet channel

Broadcast: Support Call and MP3 Broadcast

Electronic map: convenient user layout and positioning equipment

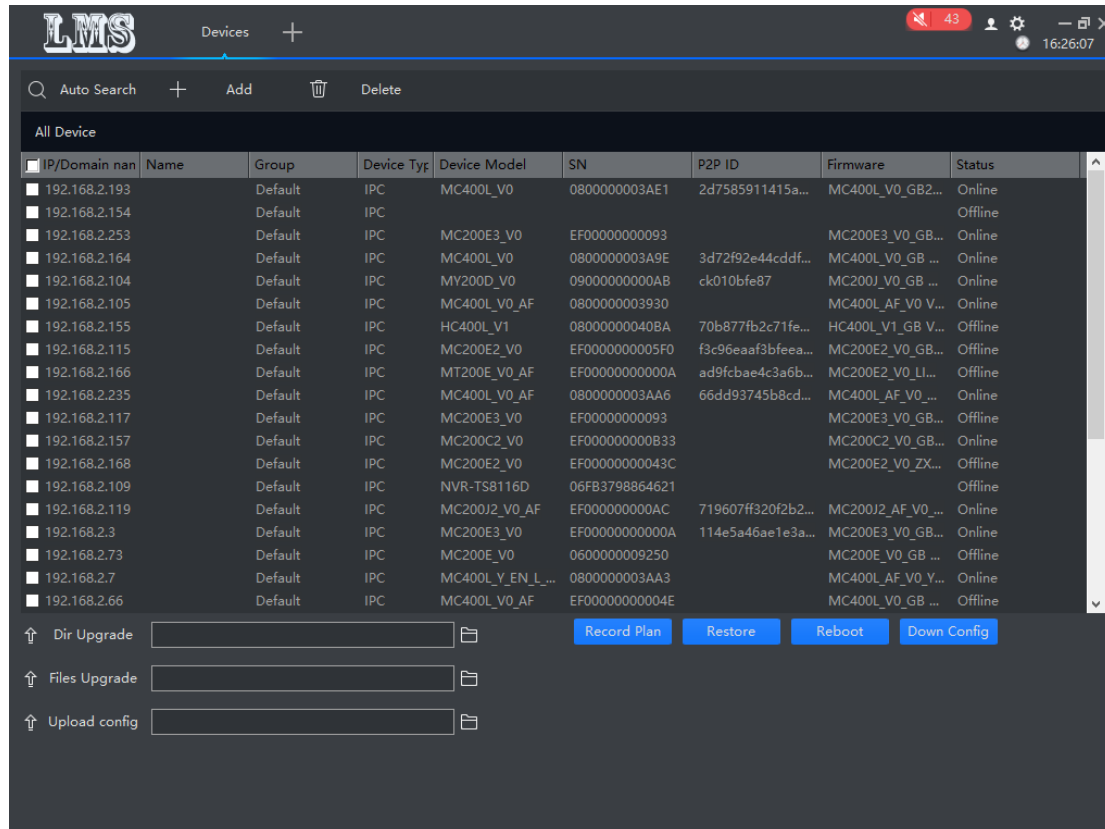
Alert event: record and query alarm information

4.2 Configuration

Equipment Management: Add, remove, modify, upgrade devices

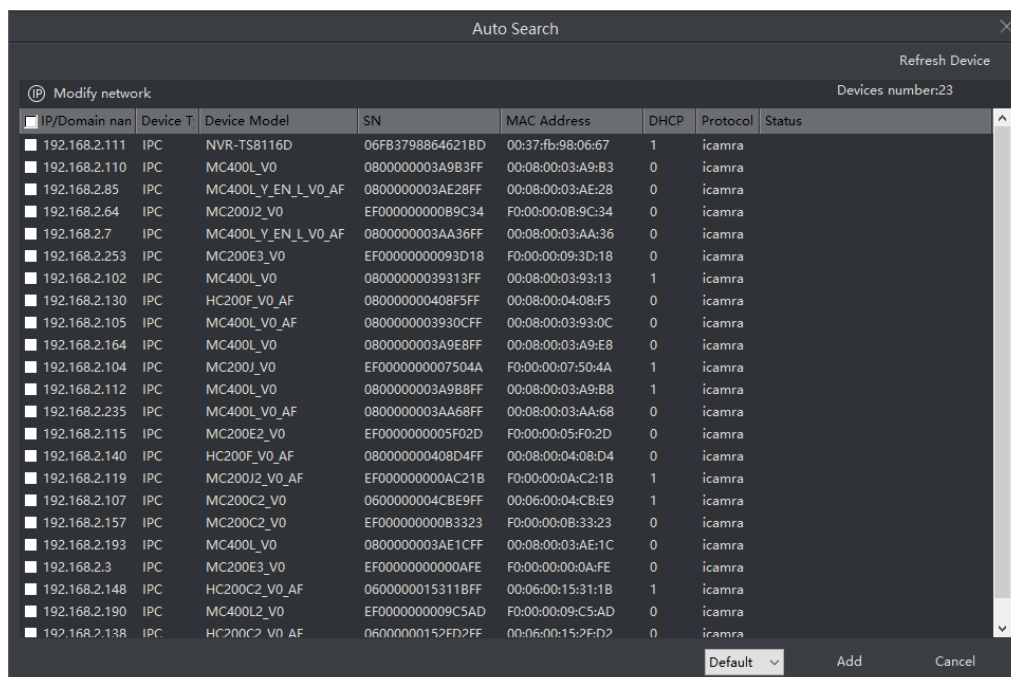
5. Equipment Management

In the new function interface configuration bar, select "Device Management" to enter the device Management page (pictured below).



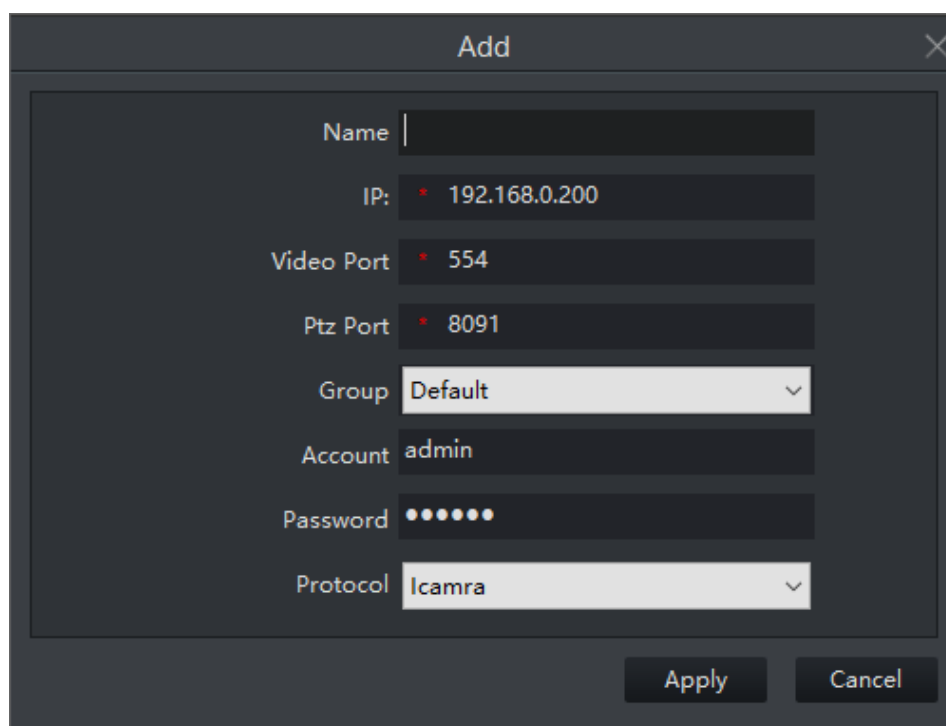
5.1 Automatic Search

can search for all devices of the same network segment, you can modify IP and to group



5.2 Add Device

You can add devices manually, including names **IP**, video port, PTZ control port, grouping, account number, password (default **Admin**, 123456) can be edited. * is required



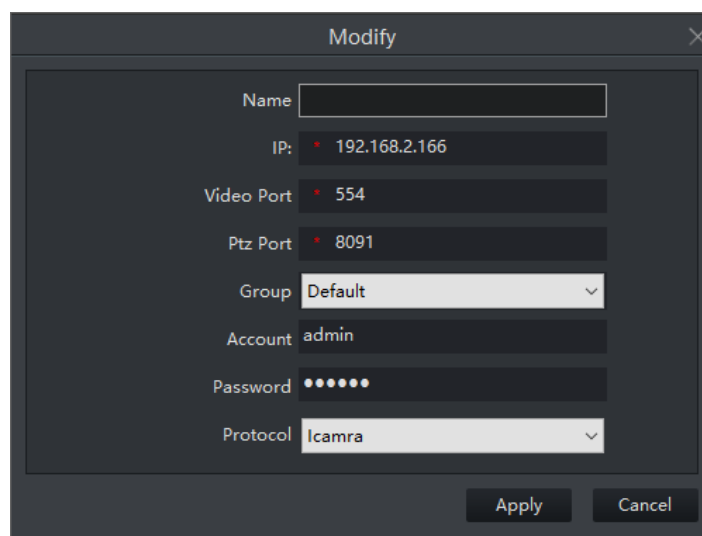
The 'Add' dialog box is a dark-themed window with a close button (X) in the top right corner. It contains several input fields for device configuration:

- Name:** An empty text input field.
- IP:** A text input field containing '192.168.0.200' with a red asterisk (*) to its left, indicating it is required.
- Video Port:** A text input field containing '554' with a red asterisk (*) to its left.
- Ptz Port:** A text input field containing '8091' with a red asterisk (*) to its left.
- Group:** A dropdown menu with 'Default' selected and a downward arrow.
- Account:** A text input field containing 'admin'.
- Password:** A text input field with six dots (••••••) representing masked characters.
- Protocol:** A dropdown menu with 'Icamra' selected and a downward arrow.

At the bottom right of the dialog are two buttons: 'Apply' and 'Cancel'.

5.3 Modify Device

This feature can modify the display information for a device. Including name **IP**, video port, PTZ control port, grouping, account number, password can be edited.



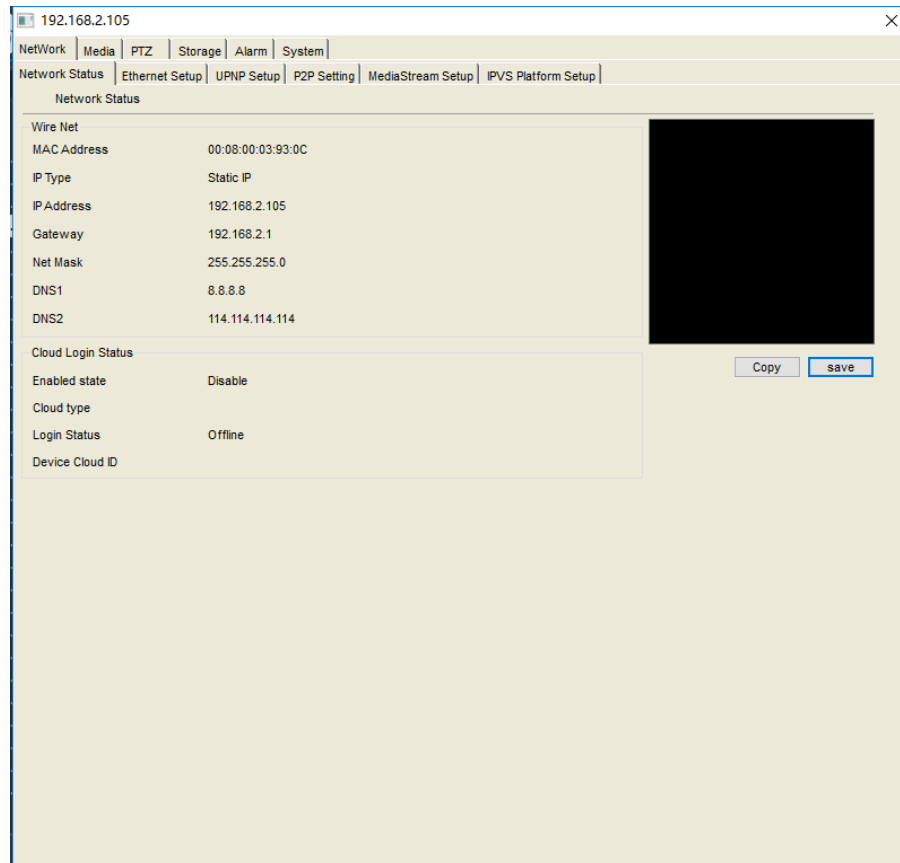
The 'Modify' dialog box is a dark-themed window with a close button (X) in the top right corner. It contains the same input fields as the 'Add' dialog, but with pre-filled values:

- Name:** An empty text input field.
- IP:** A text input field containing '192.168.2.166' with a red asterisk (*) to its left.
- Video Port:** A text input field containing '554' with a red asterisk (*) to its left.
- Ptz Port:** A text input field containing '8091' with a red asterisk (*) to its left.
- Group:** A dropdown menu with 'Default' selected and a downward arrow.
- Account:** A text input field containing 'admin'.
- Password:** A text input field with six dots (••••••) representing masked characters.
- Protocol:** A dropdown menu with 'Icamra' selected and a downward arrow.

At the bottom right of the dialog are two buttons: 'Apply' and 'Cancel'.

5.4 Remote Configuration

Possible settings include: Network settings, media settings, PTZ settings, storage settings, alarm settings, system settings, and so on, the use of the device in the front end of the detailed instructions.

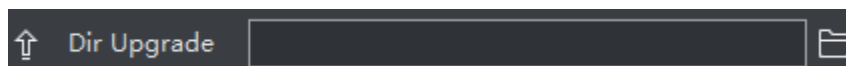


5.5 Remove Device

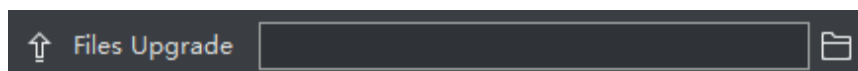
Remove the device that the client has added is not recoverable, please proceed with caution.

5.6 directory upgrades, file upgrades, and upload configurations

Catalog Upgrade: Click ,select the appropriate folder, click "Catalog Upgrade" to upgrade

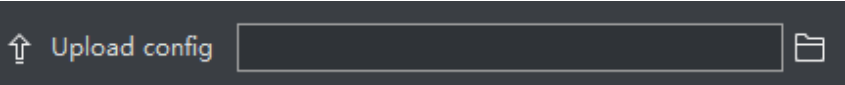


file Upgrades: Click ,select the appropriate file, click "File Upgrade" to upgrade



Upload configuration: Click , select the appropriate configuration file, click "Upload

Configuration" to upload configuration information. The appropriate configuration information takes effect immediately, but the Restore factory settings are reset.

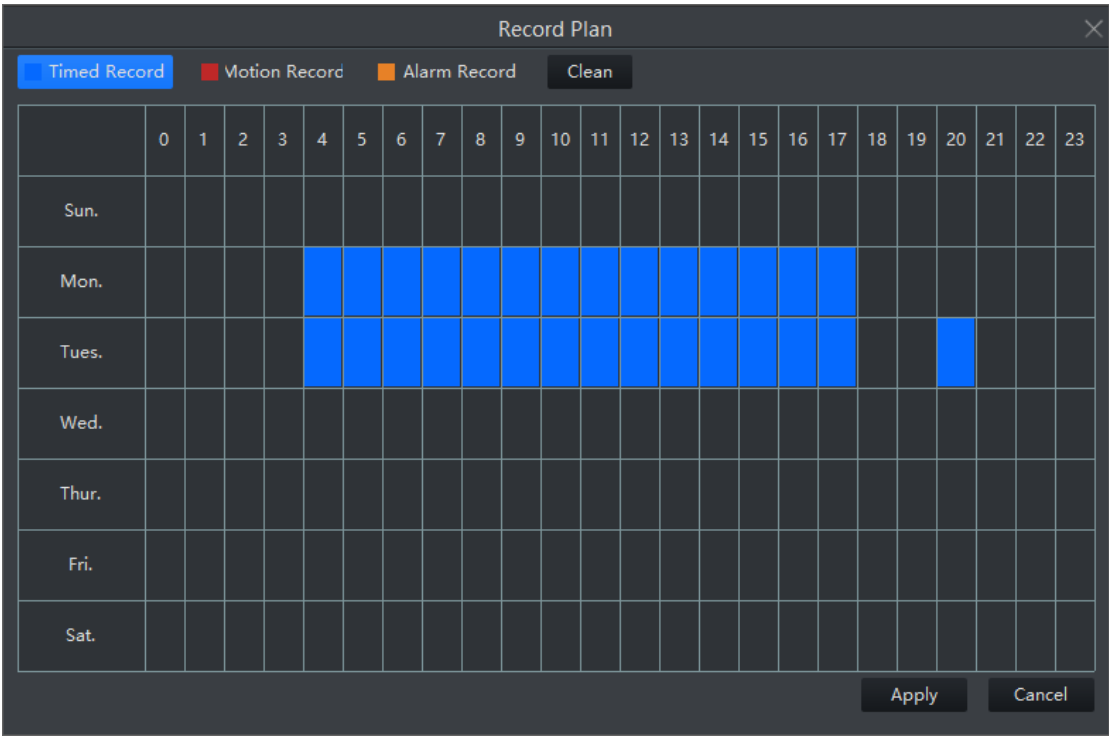


Attention:

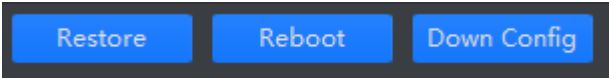
- 1.status prompts for upgrade success , such as the upgrade did not succeed, generally repeat the upgrade once; multiple upgrades did not succeed, please power off the front-end device before the upgrade, upgrade the status of the display upgrade.
- 2.Do not power off the front-end equipment during upgrade to avoid loss of program.

5.7 Video Program

can be batch or individual customized video program, including timing video, mobile detection video, alarm video, clear the video



5.8 restore factory, reboot device and download configuration



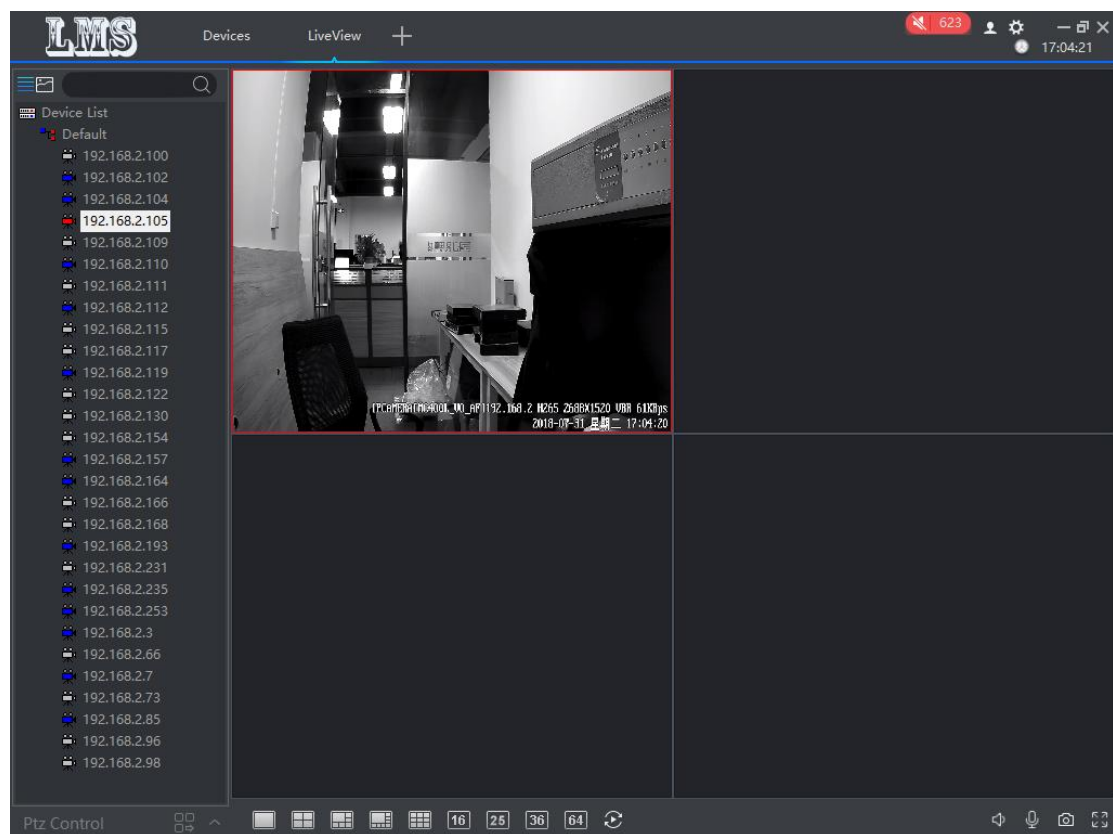
Select the device, click "Restore Factory", you can complete the recovery of equipment factory default settings operation.

After selecting the device, click "Reboot Device" to complete the device restart operation.

After selecting the device, click "Download Configuration" to download the configuration information for the device.

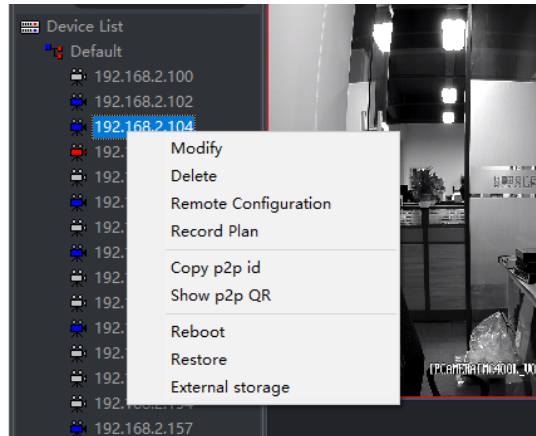
6. Preview

configuration Management After the device is added, in the configuration bar of the new feature interface, select "Preview", then jump to the video browsing interface, can be real-time video browsing (as shown below)



6.1 Tree List View

Click, you can switch to the tree list view. Devices can be grouped, deleted, and added.



6.1.1 Device List

Right Key, you can preview all the devices, delete all the devices under the list, and add groupings (as shown above)

6.1.2 grouped

Right Key, you can preview all devices under the current group, delete all of the devices for that group, and delete the group, but you cannot delete the default groupings (pictured above)

6.1.3 Device Configuration

right key to the appropriate device ,you can modify the device, delete the device, remote configuration view settings, video program settings, **peer-to-peer ID replication**, two-dimensional code generation, Reboot and restore the factory settings and store the view (above)

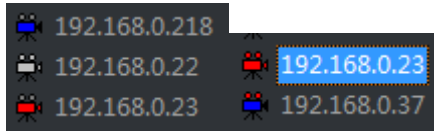
6.1.4 Search and view devices


Search Device: enter the appropriate equipment name, you can find the appropriate equipment, the equipment found to the white color (pictured below)

To View the device: Mouse in IP stay on 1s The left and right will show IP serial number and device type





设备状态:




Blue : Equipment Online


White : Device offline

Red : Device is previewing

White antenna : Equipment not recorded

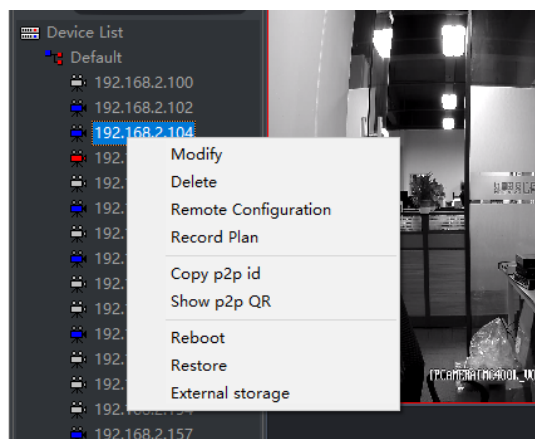
Red Antenna : The device is recording

6.2 image List View

Click , you can switch to the image list view. You can add deletes and modify the device.

6.2.1 Device Configuration

Right-click the appropriate device, you can modify the device, delete the device, remote configuration view settings, video program settings, Peer-to-peer ID replication, two-dimensional code generation, restart and restore factory settings, as well as external storage



6.2.2 Search and view devices

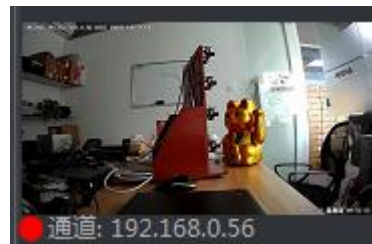
Search Device: Enter the appropriate device name, you can find the appropriate equipment, the equipment found in the background into blue



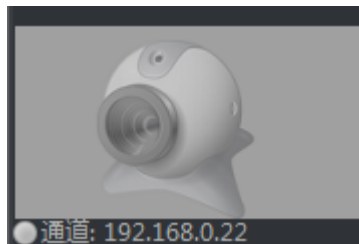
Device status: The screen will be intercepted after the preview



Green Dot: Equipment online



Red dots: Device video



White dots: Device offline

6.3 PTZ Control

Through the client's PTZ control interface for the corresponding PTZ control, the control window can be fixed or active (such as above), including the top, bottom, left, right, focus, adjust aperture, step adjustment, zoom, preset point operation. When the user is up, down, left, right, aperture, focus, variable-time control in the corresponding function keys on the left and right to start, release left stop.



Cloud Table Folding

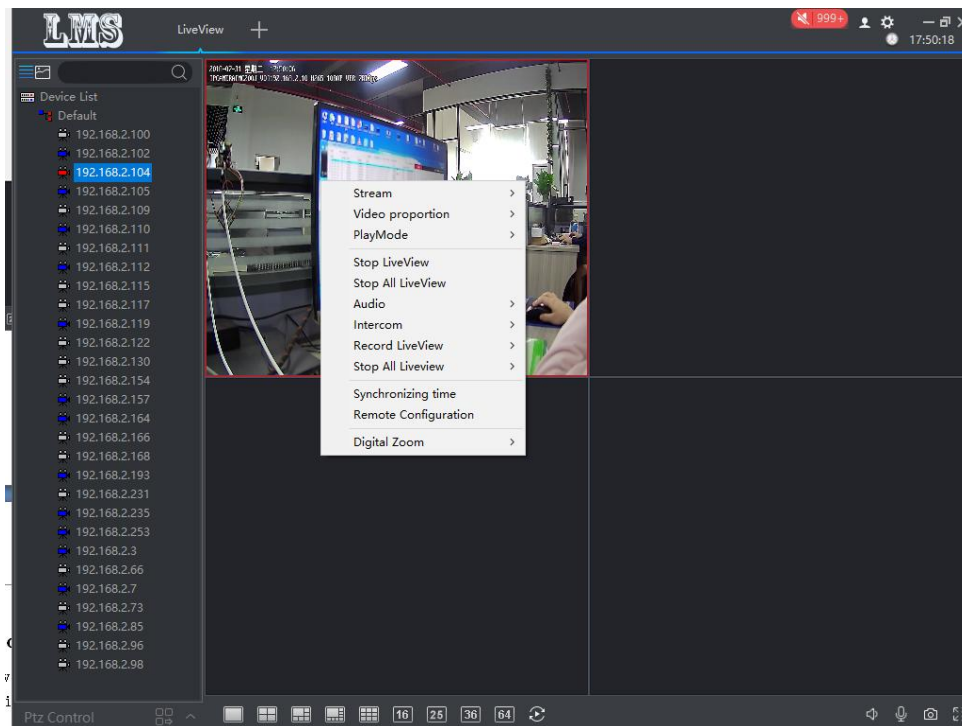


PTZ Control Interface

Attention:

Not taken AF The firmware click on this item is not working

6.4 real-time monitoring



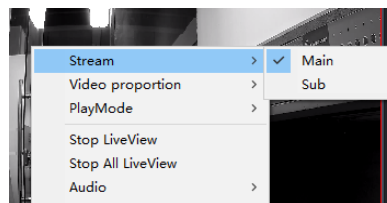
6.4.1 Real-time monitoring operations

-
- ① in the preview interface, the device tree list selects a device to double-click, then in the monitoring area of the first video stream does not display the real-time video stream of the device;
 - ② in the preview interface, select a device in the device tree list and drag it to a window in the corresponding video window area, which displays the device's live video stream;
 - ③ in the preview interface, select the device group name in the device list, right-click the mouse, a Drop-down window appears, and click "Play the group automatically", the system automatically starts playing the group's online device video stream from the first window.

6.4.2 Dual Code flow monitoring

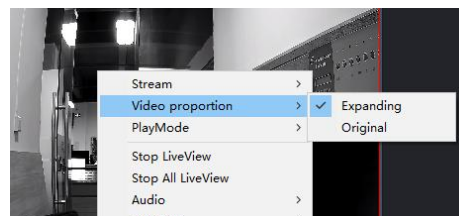
Because of the limitation of network bandwidth and the requirement of high clear video image, IPC and other front-end devices adopt double code flow technology. That is, the same time code generates two completely different (including different resolution, frame rate, picture quality) of the stream. The main stream is used for local real-time storage, and the code stream is used for remote network transmission, which takes into account the high quality requirement of local storage image and the smoothness of low bandwidth transmission image of remote network. To achieve breakthrough network bottlenecks, and maintain the local HD storage results.

Select the screen, right-click the shortcut menu, select the corresponding code stream can be switched.



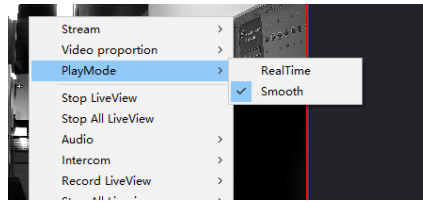
6.4.3 video Ratio

Select the screen, Right-click the shortcut menu, select the video ratio, to implement the current window full screen and the original scale display switch.



6.4.4 playback mode

Select the screen, Right-click the shortcut menu, select playback mode, can realize the current window of real-time and smooth screen display switch.



6.4.5 speech to speak

Select the screen, Right-click the shortcut menu, select the intercom ,can be opened to speak, to achieve front-end equipment for real-time two-way voice intercom function.

6.4.6 Audio

Select the screen, Right-click the shortcut menu, select the audio, you can open the audio, hear the sound of pickup received.

6.4.7 Preview Video

single preview video: Select a screen to manually video the video of this picture

All preview Video: in the preview screen, when the device is in real-time preview, click on the preview screen any location, you can record all the playback device screen. Click Close to close all preview videos

6.4.8 Stop Preview

Select the appropriate device right, right-click the menu bar click "Stop Preview" to close the current preview screen, click "Stop all Preview" to close all the preview screen.

6.4.9 Electronic Amplification

Select the appropriate Device right button, right-click the menu bar "electronic amplification", you can choose to zoom in, zoom out, drag and disable function, so that the screen to achieve the desired amplification effect.

Amplification function: The mouse will become a magnifying glass pattern, click the left mouse button, the location of the mouse will be magnified, rolling forward the pulley image will be magnified, backward rolling the pulley image will shrink;

Reduced functionality: The mouse will change to shrink the mirror pattern, click the left mouse button, the mouse position will be reduced, the roll forward pulley image will be enlarged, the backward rolling pulley image will be reduced;

Drag and drop function: The mouse will become a drag-and-drop pattern, drag the mouse pattern will move, the roll forward pulley image will be magnified, backward rolling the pulley image will shrink;


Disabling features: the mouse restores the pointer pattern, and other magnification functions are turned off.

6.4.10 screen format switching

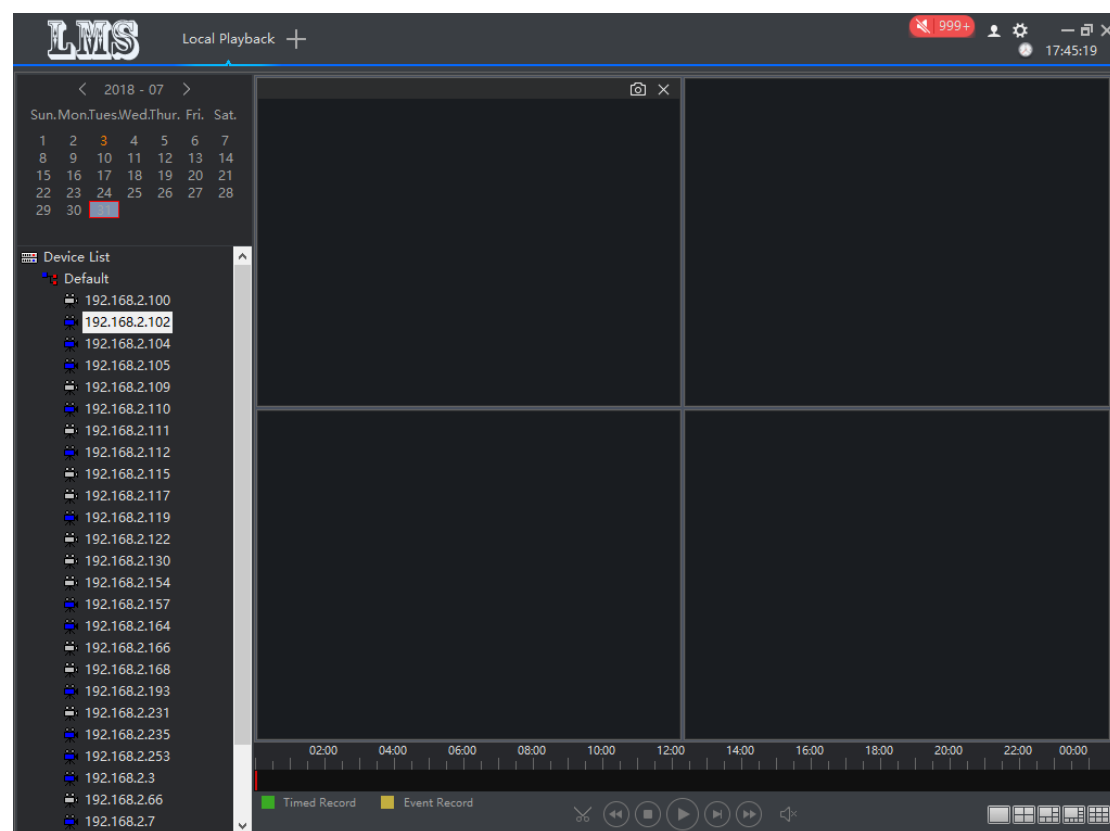
In the preview of the real-time streaming tool bar click on the corresponding split-screen button that switch to different screen format monitoring, there are the following screen selection:1 screen,4 screen,6 screen,8 screen,9 screen, the screen, the screen, the screen, the picture, the picture.



6.4.11 round patrol

Click on the corresponding wheel patrol  button in the preview of the real-time streaming tool bar to make a single and four-way round patrol

7. Local playback

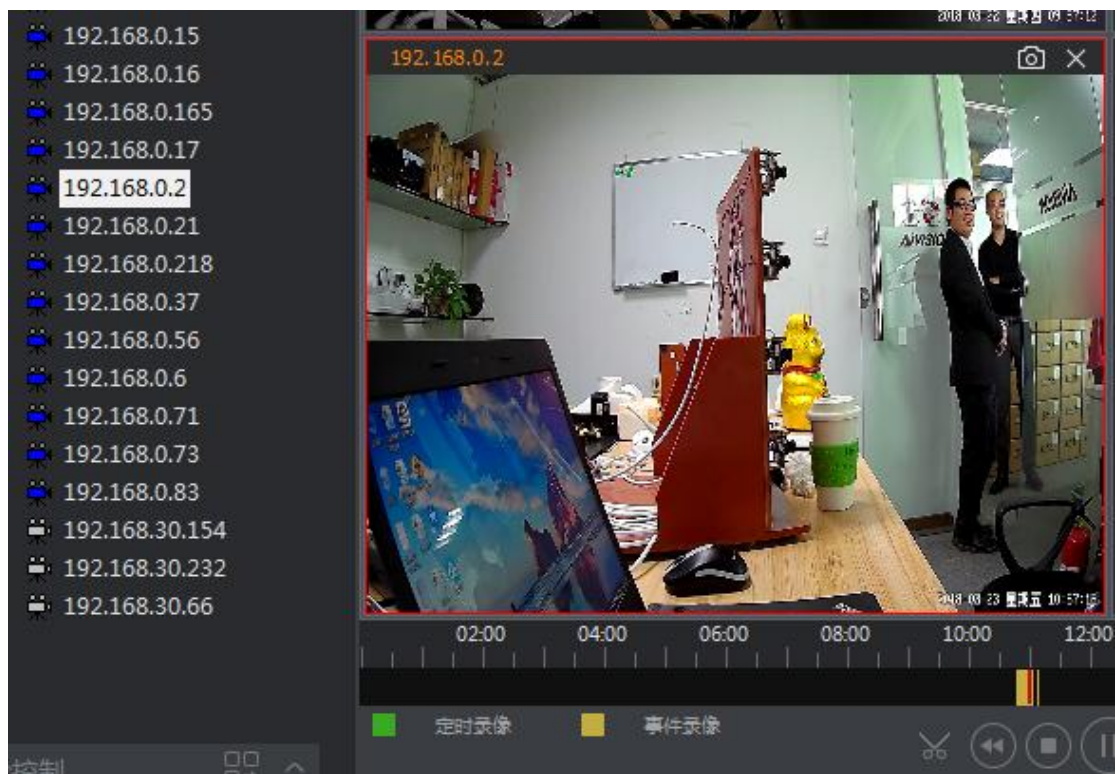


Local playback is played back with video footage from the video program that is configured in the "Configuration Management"-"video program," Where local video files are stored on the local computer. In the playback window, the user can manipulate the tool bar below to achieve time clips (reservations), rewind, stop, pause / play, frame, fast-forward, sound, and so on. Can be 1 screen,4 screen,6 screen,8 screen,9 screen at the same time playback and playback at different times. Snapshot pictures are stored by default under \lms\snapshot files, or "System settings"-"snap directory" view.



① Device list Select the appropriate IP, the date on the calendar with the video

will change to orange color, the video progress bar will also appear green (timed video) or yellow (event video) as shown below;



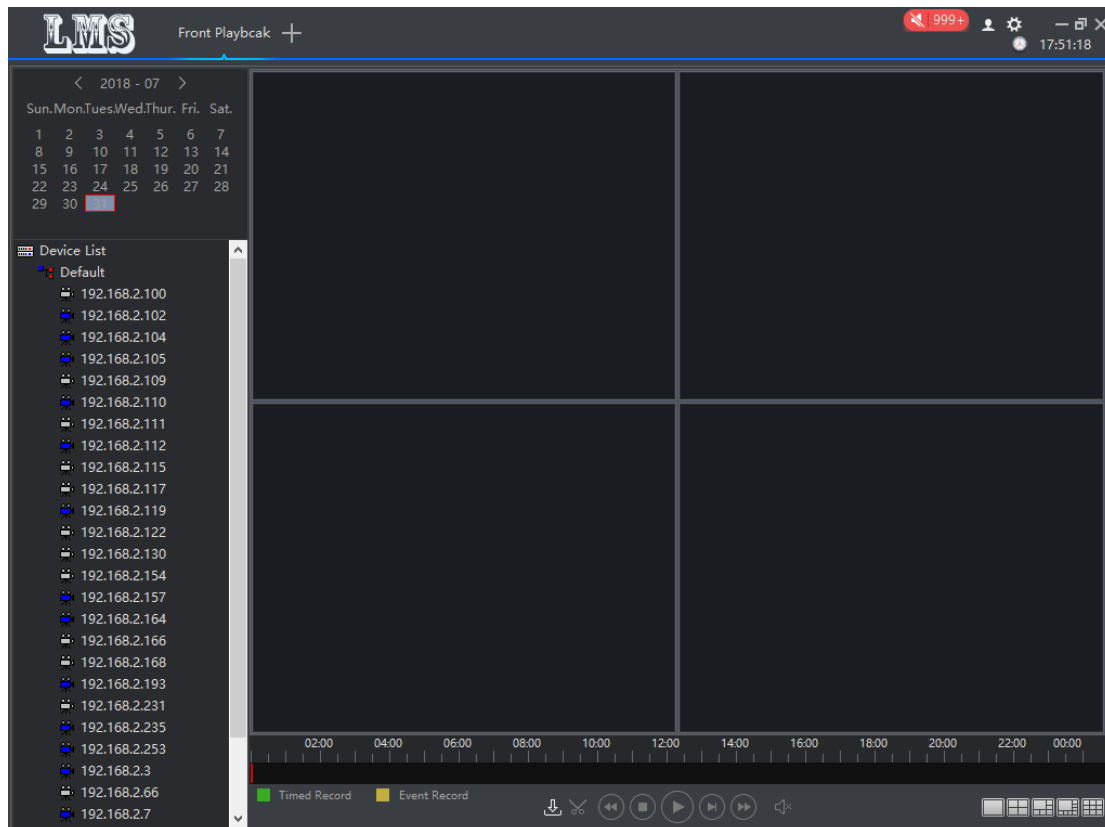
Select the appropriate date and double-click the IP, you can play the local video playback device.

Attention:



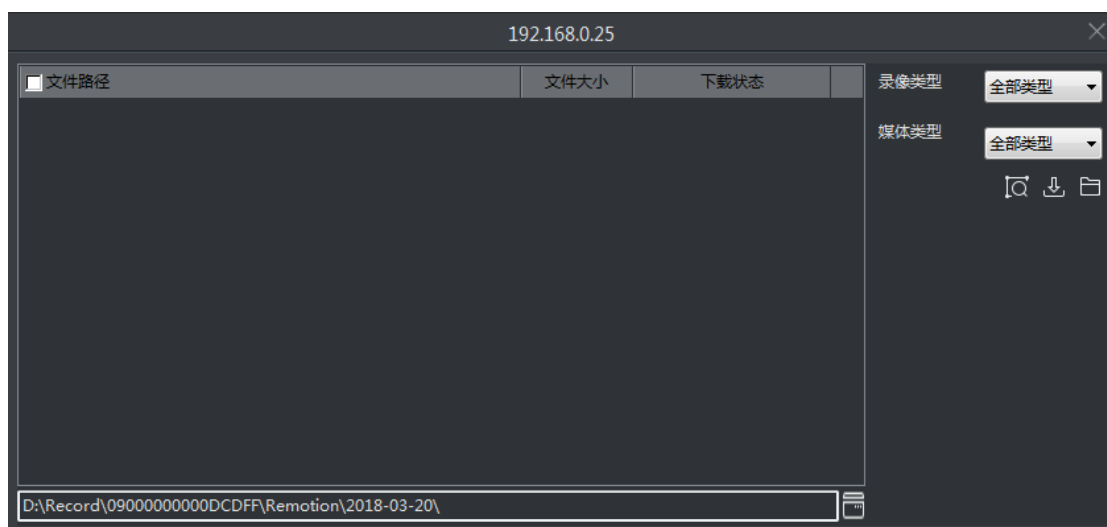
The top right corner of the video has a shortcut for capturing and closing the channel playback.

8. Remote Playback



The remote playback device requires that the device be attached to an external store. Double-click the recorded video file to directly replay the front-end video files. In the playback window, the user can manipulate the following toolbar to download video, time clip (reservation), Fast rewind, stop, pause / play, frame, fast-forward, sound and other functions. Can be 1 screen, 4 screen, 6 screen, 8 screen, 9 screen at the same time playback and playback at different times. Snapshot images are stored by default under \lms\snapshot files, or "System settings" -> "snapshot directory" view.

You can eject the following window, as shown below:





, you can search for the appropriate file



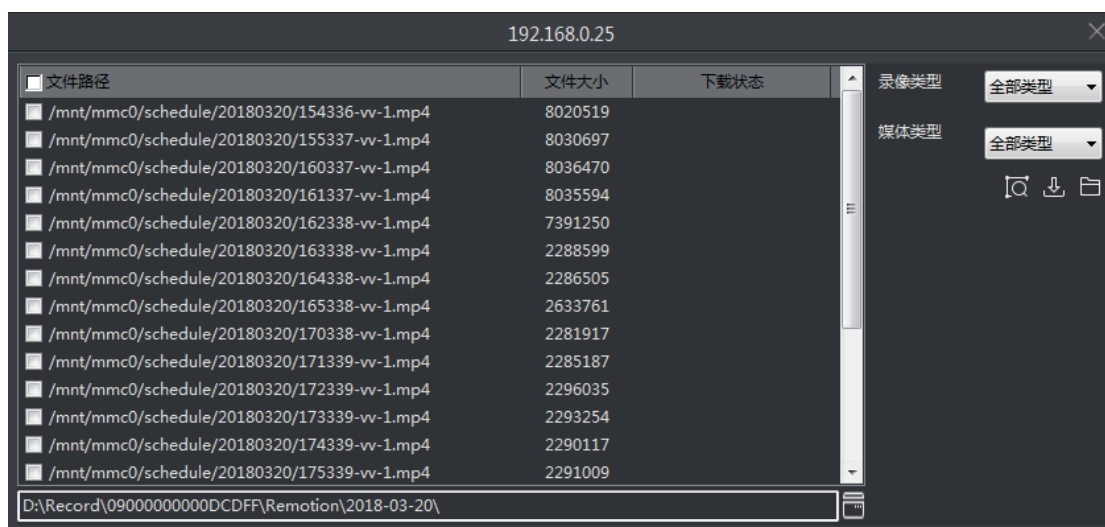
, you can download the corresponding firmware



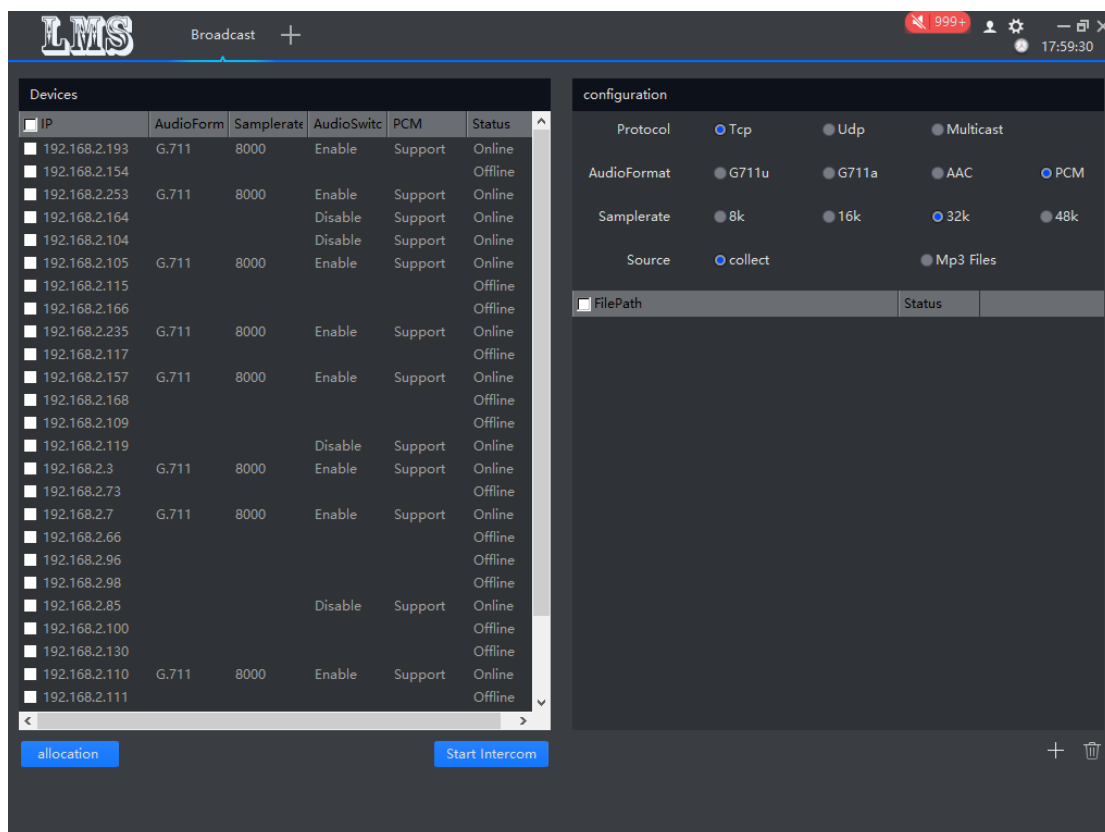
, you can open the appropriate file directory



, you can change the export file directory



9. Broadcast

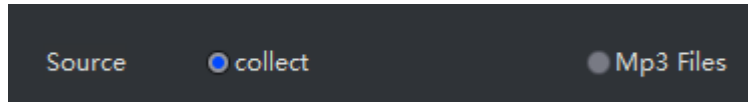




: Add Delete MP3 file

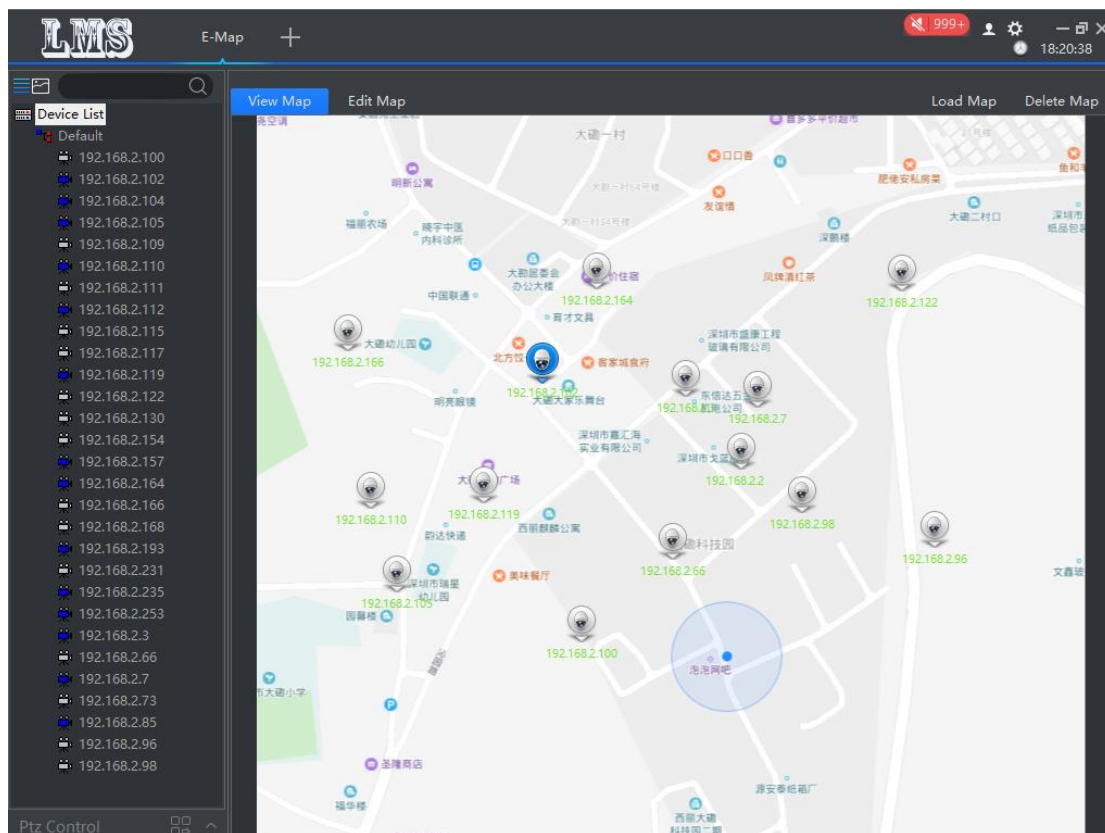
allocation

: Configure audio Transfer Protocol, audio format, sampling rate



Divided into local collection and MP3 files that can be in real time to make peace MP3 Play

10. E- map



10.1 Load maps and delete maps

Select the appropriate size of the map, click on "Load Map" to add;
Click "Remove Map" to delete the current map.

10.2 Edit Map

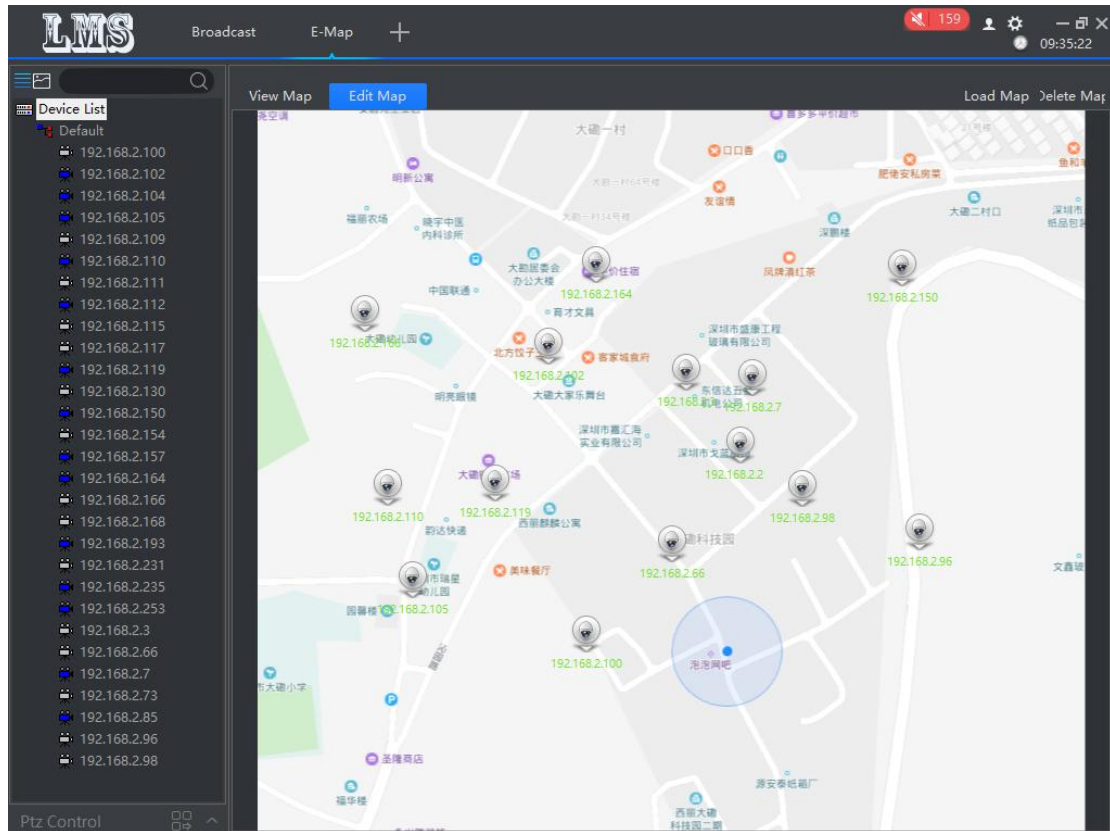
can add and delete monitoring points on the map

10.2.1 The addition of monitoring points

Select the device in the left tree and drag it to the appropriate location on

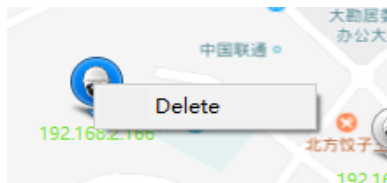
the map. When you drag the device into , the corresponding position becomes





10.2.1 deletion of monitoring points

Select the monitor point and right-click to remove hotspot.



10.3 Preview Map

Double-click the monitoring equipment, you can see the monitor point of the real-time screen, the master code flow to the switch and grasp the map.



11.Alarm Event

LMS

Alarm Event

670

10:05:59

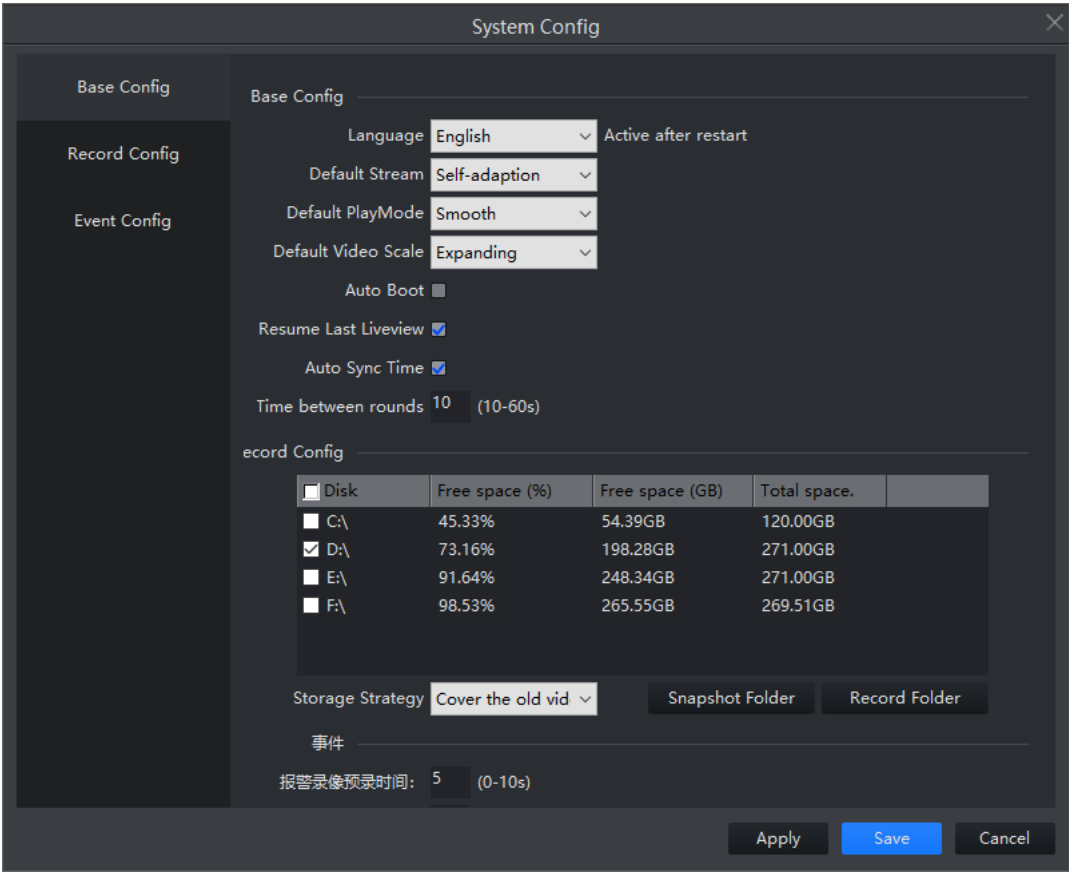
Index	Alarm Time	Alarm Type	Name
670	2018-08-01 10:06:42	Motion Detection	192.168.2.104
669	2018-08-01 10:06:36	Motion Detection	192.168.2.104
668	2018-08-01 10:06:30	Motion Detection	192.168.2.104
667	2018-08-01 10:06:24	Motion Detection	192.168.2.104
666	2018-08-01 10:06:18	Motion Detection	192.168.2.104
665	2018-08-01 10:06:12	Motion Detection	192.168.2.104
664	2018-08-01 10:06:06	Motion Detection	192.168.2.104
663	2018-08-01 10:06:00	Motion Detection	192.168.2.104
662	2018-08-01 10:05:52	Motion Detection	192.168.2.104
661	2018-08-01 10:05:45	Motion Detection	192.168.2.104
660	2018-08-01 10:05:39	Motion Detection	192.168.2.104
659	2018-08-01 10:05:33	Motion Detection	192.168.2.104
658	2018-08-01 10:05:32	Motion detection alar...	192.168.2.104
657	2018-08-01 10:05:27	Motion Detection	192.168.2.104
656	2018-08-01 10:05:21	Motion Detection	192.168.2.104
655	2018-08-01 10:05:15	Motion Detection	192.168.2.104
654	2018-08-01 09:04:25	Motion detection alar...	192.168.2.102
653	2018-08-01 10:05:08	Motion Detection	192.168.2.104
652	2018-08-01 09:04:20	Video failed	192.168.2.102
651	2018-08-01 09:04:20	Video failed	192.168.2.102
650	2018-08-01 09:04:20	Motion Detection	192.168.2.102
649	2018-08-01 10:05:02	Motion Detection	192.168.2.104
648	2018-08-01 10:04:49	Motion detection alar...	192.168.2.104
647	2018-08-01 10:04:44	Motion Detection	192.168.2.104
646	2018-08-01 10:04:37	Motion Detection	192.168.2.104
645	2018-08-01 10:04:37	Motion detection alar...	192.168.2.104
644	2018-08-01 10:04:30	Motion Detection	192.168.2.104
643	2018-08-01 10:03:41	Motion detection alar...	192.168.2.164
642	2018-08-01 10:04:24	Motion Detection	192.168.2.104

Total 670 Records4/4Jump

The device alarm information is recorded and a warning is issued



12.systemSettings



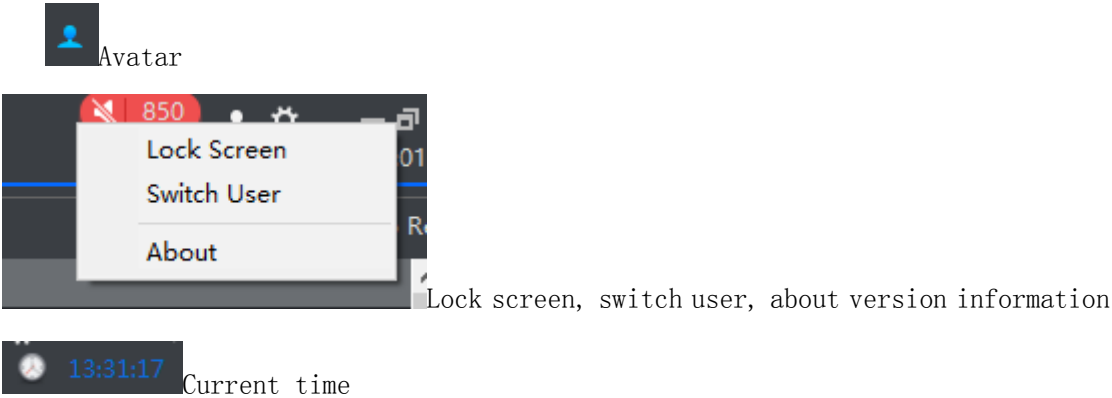
12.1 Basic Configuration

Configure system language, default stream, playback mode, video ratio, etc.

12.2 Video Configuration

Disk storage status and modify video storage path, snapshot and video directory quick access Way

13. other





Minimize, Maximize/restore, Shutdown system